

2023



**College of
Behavioral & Community
Sciences**

**GLOBAL
ENGAGEMENT
REPORT**



USF World
UNIVERSITY of SOUTH FLORIDA

Table of Contents

| | |
|---|-----------|
| International Student Enrollment | 4 |
| Enrollment Totals | |
| Top Majors for International Students | |
| Countries of Origin | |
| International Scholars | 5 |
| Countries of Origin | |
| J-1 Scholar Types | |
| Education Abroad | 6 |
| Education Abroad Sponsored Travel | |
| Top Destinations for USF Education Abroad programming | |
| Student Demographics | |
| Virtual Global Learning | 8 |
| Virtual Programming | |
| Student Demographics | |
| Student Global Activities | 9 |
| Independent Student Travel | |
| Peace Corps Prep Student Participants | |
| Global Citizens Award Participants | |
| Global Scholarships | |
| Faculty Global Activities | 10 |
| Faculty Virtual Global Exchange Participation | |
| Faculty Fulbright Awards | |
| Faculty International Travel | |
| Current International Partnerships | 11 |

International Student Enrollment 2022-2023

International Student Totals as of Fall 2022

| | |
|---------------|---------------------|
| Undergraduate | Post Completion OPT |
| 32 | 5 |
| Graduate | Post Completion OPT |
| 18 | 5 |

Top Countries of Origin

Undergraduate

| | | |
|--|-------------------------------|---|
|  | The Bahamas | 3 |
|  | Colombia & Mexico | 2 |
|  | Oman & Spain | 2 |
|  | Trinidad & Tobago & Venezuela | 2 |

***All other countries had 1 student represented and are not listed here*

Graduate

| | | |
|---|-----------|---|
|  | Canada | 3 |
|  | Honduras | 2 |
|  | Hong Kong | 2 |

***All other countries had 1 student represented and are not listed here*

Top Majors for International Students

Top Undergraduate Majors

| | |
|------------------------------------|----|
| Criminology | 19 |
| Language & Speech-Hearing Sciences | 5 |
| Behavioral Healthcare | 4 |

Top Graduate Majors

| | |
|---------------------------------------|---|
| Applied Behavior Analysis | 3 |
| Behavioral and Communication Sciences | 3 |
| Communication Sciences & Disorders | 3 |
| Social Work | 3 |

International Scholars 2022-2023

J-1 Countries of Origin

| | |
|------------------|----------|
| Slovenia: | 2 |
| Mexico: | 1 |



J-1 Scholar Types

| | |
|-------------------------------|------------|
| Research Scholar(s): | 1 |
| Professor(s): | --- |
| Short-Term Scholar(s): | 2 |
| Specialist(s): | --- |
| Total J-1 Scholars: | 3 |

Education Abroad

2020-2023

Education Abroad Sponsored Travel

Students traveling on *for-credit* USF Education Abroad programs, affiliated provider programs, and as exchange students with partner universities is summarized below. Independent, *for-credit* student travelers are also included in the immediate totals below.








| | 2020-2021 | 2021-2022 | 2022-2023 |
|-----------------------|-----------|-----------|-----------|
| Total Students | 2 | 79 | 71 |
| Undergraduate | 2 | 66 | 62 |
| Graduate | --- | 13 | 9 |
| First Generation | 1 | 28 | 20 |

Program Type*

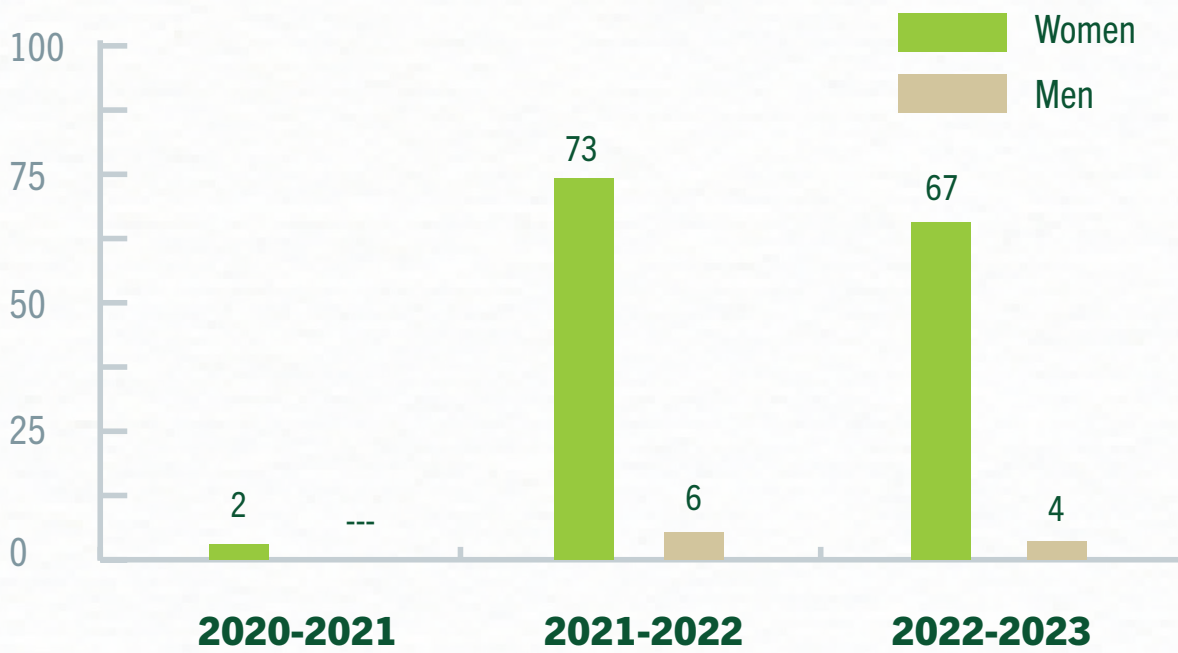
| | 2020-2021 | 2021-2022 | 2022-2023 |
|---------------------|-----------|-----------|-----------|
| Faculty-Led | 1 | 71 | 64 |
| Semester Exchange | --- | 1 | --- |
| Affiliate Providers | 1 | 3 | 5 |

*Independent student travel is not reported in the "Program Type" numbers, and only for-credit experiences are reflected in the "Total Students" figures above. All independent student travel is reported on page 9.

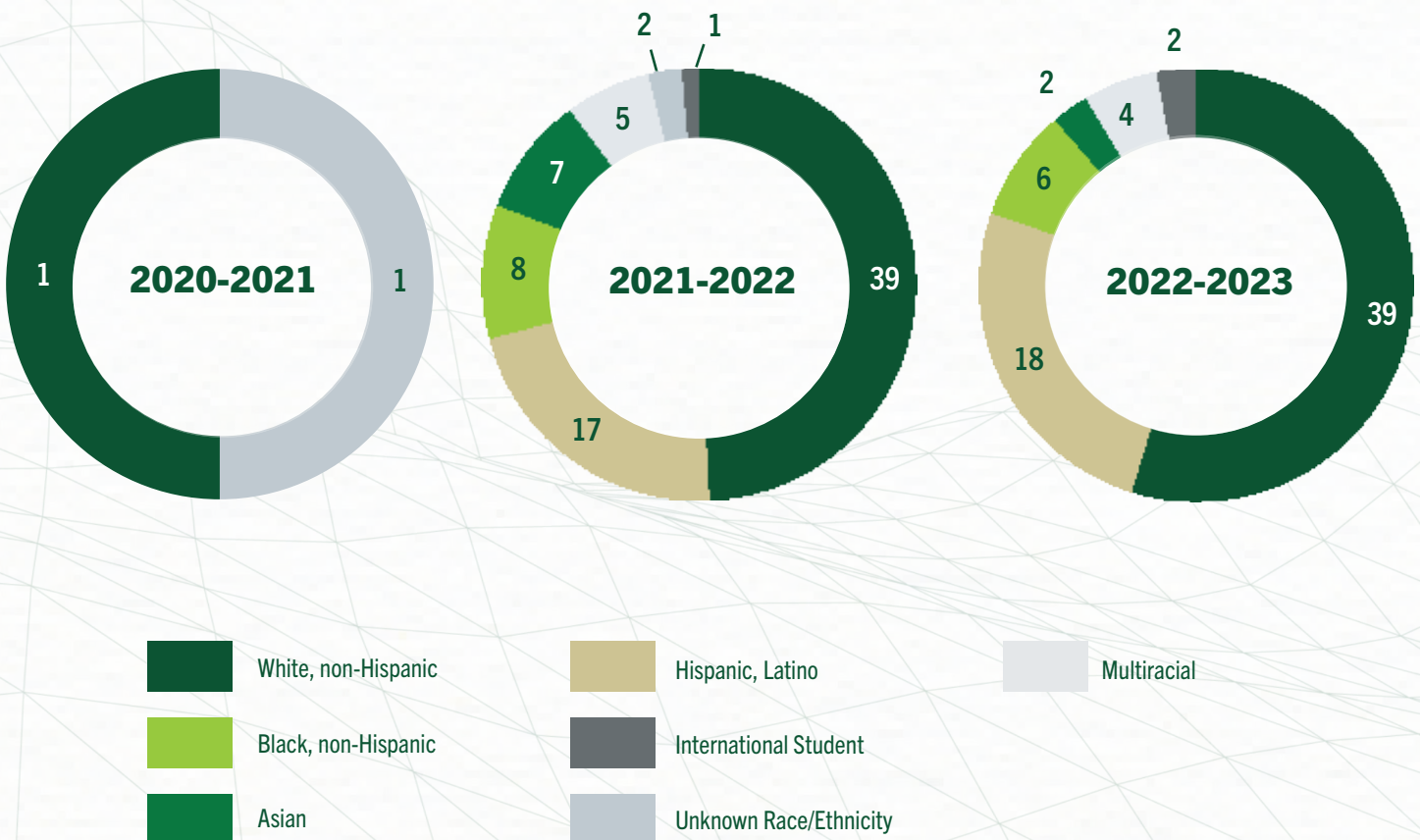
Top 3 Destinations for USF Education Abroad Programming

| 2020-2021 | | 2021-2022 | | 2022-2023 | |
|---|---|---|----|--|----|
|  Italy | 2 |  Switzerland | 23 |  Italy | 19 |
| --- | |  Italy | 15 |  Spain | 14 |
| --- | |  Spain | 15 |  United Kingdom | 10 |

Student Gender



Student Race & Ethnicity



Virtual Global Learning 2020-2023

Virtual Programs

| | 2020-2021 | 2021-2022 | 2022-2023 |
|-----------------------------|-------------------------------|-------------------------------|------------------------------|
| USF Sponsored Virtual | 1 | --- | --- |
| USF Global Tech Program | 6 | 14 | 4 |
| Global Virtual Internships | --- | --- | --- |
| GCP Operation Global Action | 5 | --- | --- |
| Virtual Global Exchange | 2 | 9 | 5 |
| Total Participants | 2020-2021 Total: 14 | 2021-2022 Total: 23 | 2022-2023 Total: 9 |

Student Race & Ethnicity

| | 2020-2021 | 2021-2022 | 2022-2023 |
|------------------------|-----------|-----------|-----------|
| White, non-Hispanic | 6 | 6 | 5 |
| Black, non-Hispanic | 2 | 2 | 1 |
| Asian | 1 | --- | --- |
| Hispanic, Latino | 4 | 12 | 2 |
| International Student | --- | --- | --- |
| Unknown Race/Ethnicity | --- | 2 | 1 |
| Multiracial | 1 | 1 | --- |

Student Gender

| | 2020-2021 | 2021-2022 | 2022-2023 |
|-------|-----------|-----------|-----------|
| Women | 11 | 15 | 6 |
| Men | 2 | 8 | 3 |

Student Global Activities 2020-2023

Independent Student Travel

Undergraduate & Graduate students traveling independently for research, conference participation, community service, or internships. These students *may or may not* be included in the Study Abroad figures on page 6 depending on the credit-status of the experience.

| | 2020-2021 | 2021-2022 | 2022-2023 |
|-------------------------|-----------|-----------|-----------|
| Individual Experiences | --- | 3 | 2 |
| Group Experiences | --- | 3 | 1 |
| Non-Affiliated Programs | --- | --- | --- |

Peace Corps Prep* 2022-2023

Participants

23



Peace Corps

**Peace Corps Prep participant numbers reflect a change in counting methodology and encompass all USF*

Global Citizens Award* 2022-2023

Participants

5



GLOBAL CITIZENS PROJECT

**The Global Citizens Project changed its name in 2022 to Global Citizens Award*

Global Scholarships

| | 2020-2021 | 2021-2022 | 2022-2023 |
|-----------------------------|-----------|-----------|-----------|
| Boren Awards | --- | --- | --- |
| Fulbright Awards | --- | --- | --- |
| Gilman International Awards | 1 | 9 | --- |

Faculty Global Activities

2022-2023

Faculty Virtual Global Exchange

| Students Served | Faculty | Credit Courses | Non-Credit Course |
|-----------------|---------|----------------|-------------------|
| [5] | -- | -- | -- |

*The bracketed number is total students from your college who attended VGE classes from *any* college/program. No BCS classes were reported as containing a virtual global exchange component for the given year.

Faculty Fulbright Awards

2018-2019

Chih-Chin Chou Taiwan

2019-2020

2020-2021

Trina Spencer South Africa

2021-2022

2022-2023



Faculty International Travel (By number of faculty)

| | 2020-2021 | 2021-2022 | 2022-2023 |
|-----------------------------|-----------|-----------|-----------|
| Business | 2 | 16 | 21 |
| Faculty-Staff with Students | 1 | 11 | 7 |

Current International Partnerships

| Country | Agreement Type | Partner(s) | Expiration | Status |
|--|---------------------------------|--|------------|--------|
| Czech Republic | General Collaboration Agreement | Charles University in Prague, Second Faculty of Medicine | 5/15/2025 | Active |
| <p>Description: This is a university-wide general collaboration agreement sponsored by the USF School of Aging Studies and the College of Behavioral and Community Sciences.</p> <p>Contact(s): randel@usf.edu (Home Principal)</p> | | | | |
| Denmark | General Collaboration Agreement | Ida Institute | 10/11/2027 | Active |
| <p>Description: This is a university-wide general collaboration agreement sponsored by the USF College of Behavioral and Community Sciences and the School of Social Work.</p> <p>Contact(s): chisolm@usf.edu (Home Principal)</p> | | | | |
| Malawi | General Collaboration Agreement | African Bible College Malawi | 7/24/2025 | Active |
| <p>Description: This is a university-wide general collaboration agreement sponsored by the USF College of Behavioral and Community Science.</p> <p>Contact(s): jlister@usf.edu (Home Principal)</p> | | | | |
| Peru | General Collaboration Agreement | Socios en Salud | 4/1/2025 | Active |
| <p>Description: This is a university-wide general collaboration agreement sponsored by the USF College of Behavioral and Community Sciences and the School of Social Work.</p> <p>Contact(s): jeromegalea@usf.edu (Home Principal)</p> | | | | |
| South Korea | General Collaboration Agreement | Socios en Salud | 4/1/2025 | Active |
| <p>Description: This is a university-wide general collaboration agreement sponsored by the USF School of Aging Studies and the College of Behavioral and Community Sciences.</p> <p>Contact(s): randel@usf.edu (Home Principal)</p> | | | | |

Spain General Collaboration Abat Oliva CEU University 4/1/2026 Active
Agreement

Description:

This is a university-wide general collaboration agreement sponsored by the USF College of Behavioral and Community Sciences and the Department of Criminology on the USF Sarasota-Manatee campus.

Contact(s):

fawnngo@usf.edu (Home Principal)

Taiwan General Collaboration National Changhua 9/24/2024 Active
Agreement University of Education

Description:

This is a university-wide general collaboration agreement sponsored by the USF College of Behavioral and Community Sciences and the Department of Child and Family Studies (Rehabilitation and Metal Health Counseling Program).

Contact(s):

chouc@usf.edu (Home Principal)





USF World

usf.edu/world

in

